

FOR SALE
+/-2.8 Acre Industrial Site
Hanford, CA



DESCRIPTION: Open Industrial Land, Graded with Utilities.

ACRES: +/- 2.8 Acres

APN: 018-242-033.

LOCATION: Crown Ave & Industrial Way east of 11th

PRICE: \$206,000

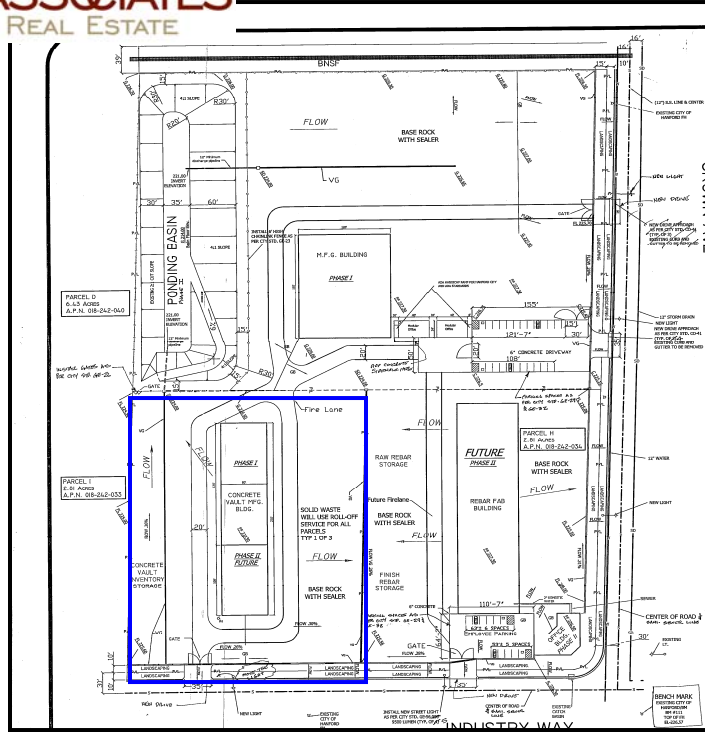
CONTACT: Arnel @ Schuil & Associates Off. (559) 734-1700 Cell. 805-6347



SCHUIL & ASSOCIATES
DIVERSIFIED REAL ESTATE

AGRICULTURAL ◦ DEVELOPMENTS

5020 W Mineral King Ave, Ste. A
Visalia, CA 93291
(559) 734-1700
Fax: 734-7848
www.schuil.com



CONTACT: Arnel Koster

Off. (559) 734-1700

Cell. (559) 805-6347

ALL INFORMATION IS DEEMED RELIABLE BUT NOT GAURANTEED



SCHUIL & ASSOCIATES
DIVERSIFIED REAL ESTATE

AGRICULTURAL ◦ DEVELOPMENTS

5020 W Mineral King Ave, Ste. A
Visalia, CA 93291
(559) 734-1700
Fax: 734-7848
www.schuil.com

FOR SALE

+/-2.8 Acre Industrial Site

Hanford, CA



DESCRIPTION: Open Industrial Land, Graded with Utilities.

ACRES: +/- 2.8 Acres

APN: 018-242-034.

LOCATION: Crown Ave & Industrial Way east of 11th

PRICE: \$206,000

CONTACT: Arnel @ Schuil & Associates Off. (559) 734-1700 Cell. 805-6347

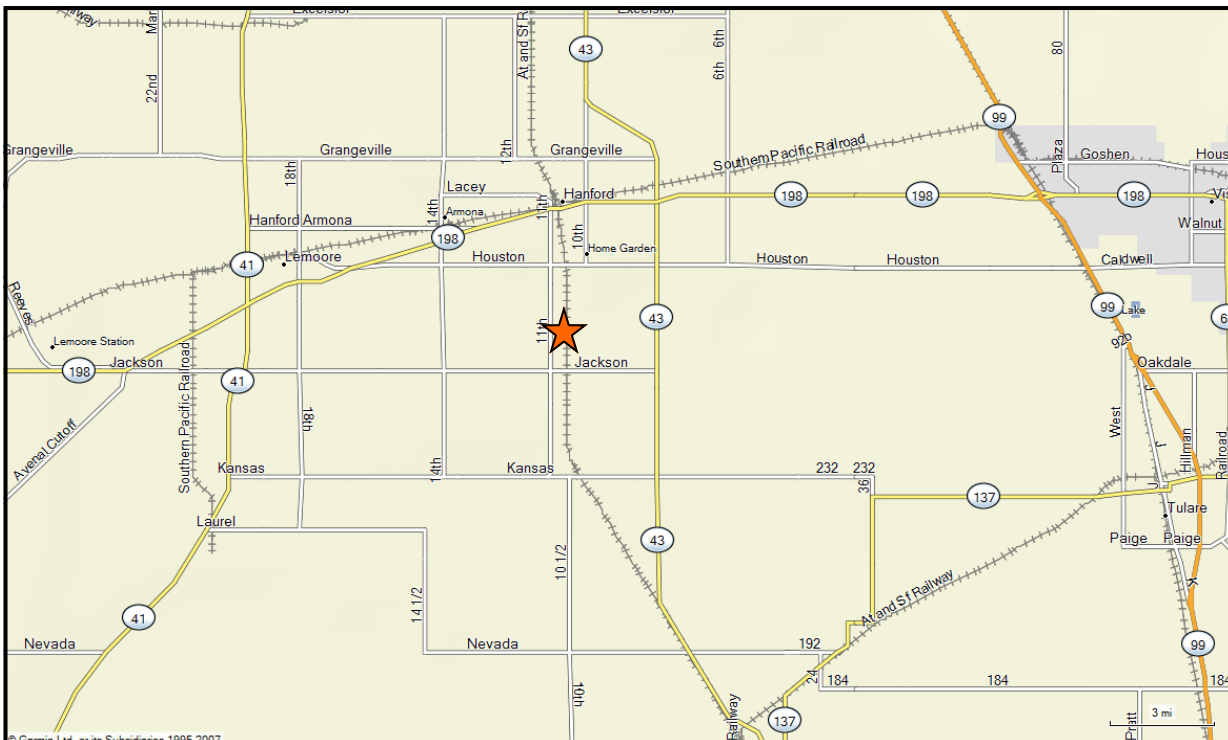
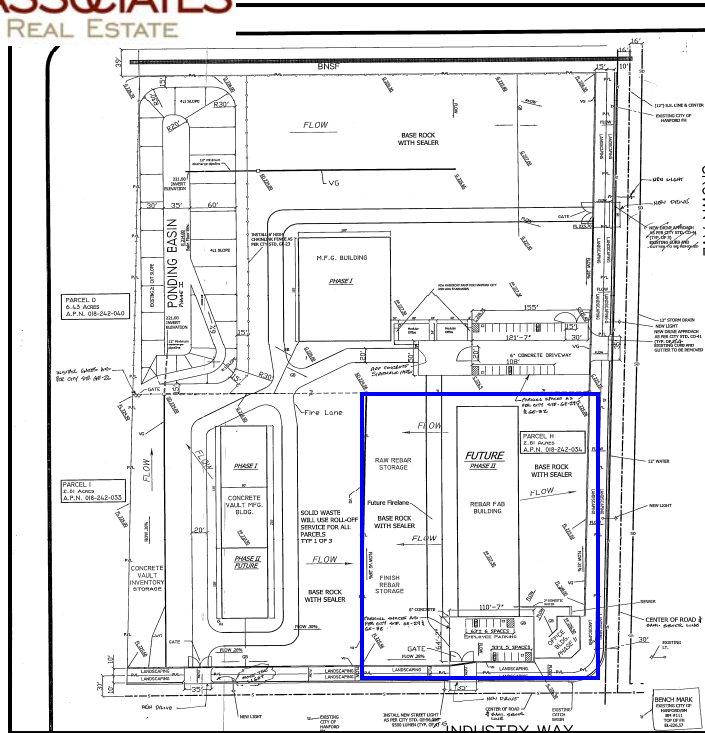
ALL INFORMATION IS DEEMED RELIABLE BUT NOT GAURANTEED



SCHUIL & ASSOCIATES
DIVERSIFIED REAL ESTATE

AGRICULTURAL ◦ DEVELOPMENTS

5020 W Mineral King Ave, Ste. A
Visalia, CA 93291
(559) 734-1700
Fax: 734-7848
www.schuil.com



CONTACT: Arnel Koster

Off. (559) 734-1700

Cell. (559) 805-6347

ALL INFORMATION IS DEEMED RELIABLE BUT NOT GAURANTEED



SCHUIL & ASSOCIATES
DIVERSIFIED REAL ESTATE

AGRICULTURAL ◦ DEVELOPMENTS

5020 W Mineral King Ave, Ste. A
Visalia, CA 93291
(559) 734-1700
Fax: 734-7848
www.schuil.com

FOR SALE

+/-6.43 Acre Industrial Site

Hanford, CA



DESCRIPTION: Open Industrial Land, Graded with Utilities.

ACRES: +/- 6.43 Acres

APN: 018-242-040.

LOCATION: Crown Ave & Industrial Way east of 11th

PRICE: \$475,000

CONTACT: Arnel @ Schuil & Associates Off. (559) 734-1700 Cell. 805-6347

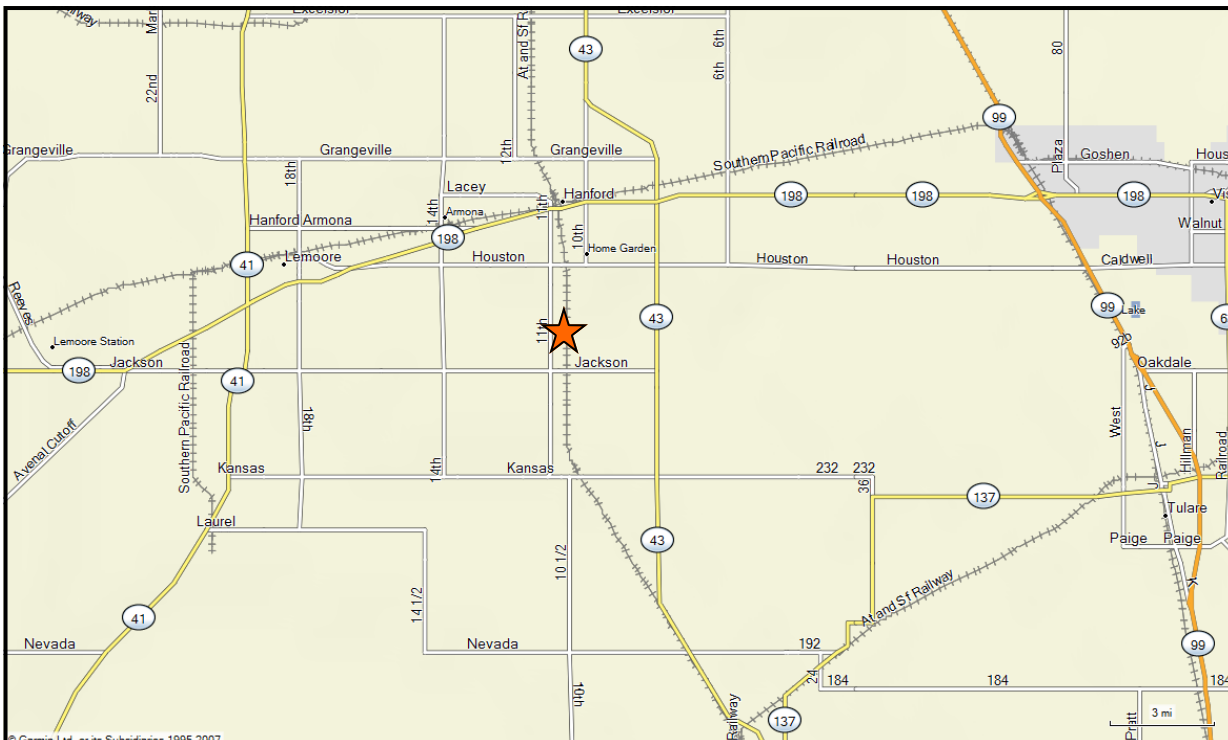
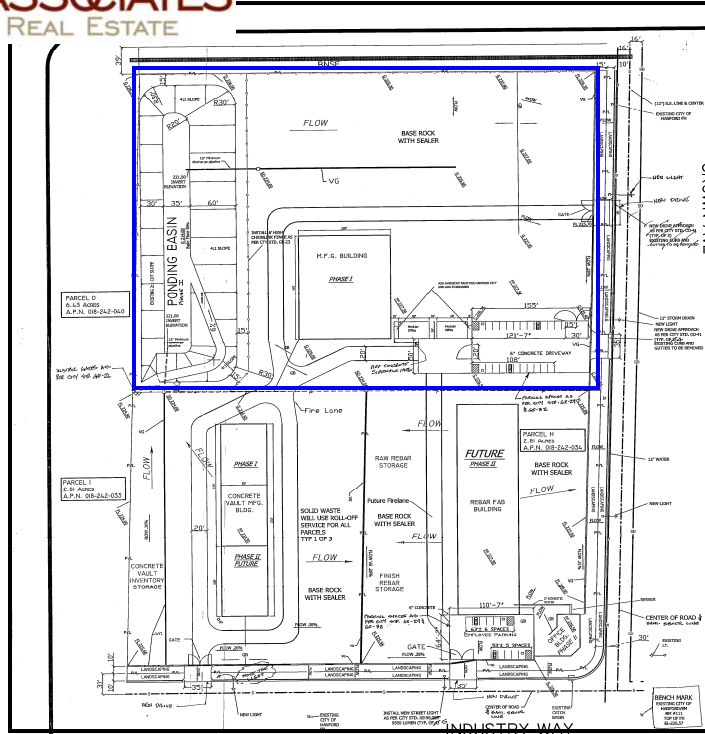
ALL INFORMATION IS DEEMED RELIABLE BUT NOT GAURANTEED



SCHUIL & ASSOCIATES
DIVERSIFIED REAL ESTATE

AGRICULTURAL ◦ DEVELOPMENTS

5020 W Mineral King Ave, Ste. A
Visalia, CA 93291
(559) 734-1700
Fax: 734-7848
www.schuil.com



CONTACT: Arnel Koster

Off. (559) 734-1700

Cell. (559) 805-6347



SCHUIL & ASSOCIATES
DIVERSIFIED REAL ESTATE

AGRICULTURAL ◦ DEVELOPMENTS

5020 W Mineral King Ave, Ste. A
Visalia, CA 93291
(559) 734-1700
Fax: 734-7848
www.schuil.com

FOR SALE

+/-12.03 Acre Industrial Site

Hanford, CA



DESCRIPTION: Open Industrial Land, Graded with Utilities.

ACRES: +/- 12.03 Acres

APN: 018-242-033, 034, 040.

LOCATION: Crown Ave & Industrial Way east of 11th

PRICE: \$760,000

CONTACT: Arnel @ Schuil & Associates Off. (559) 734-1700 Cell. 805-6347

ALL INFORMATION IS DEEMED RELIABLE BUT NOT GAURANTEED

